



73-87 GM Truck Clutch Pedal Conversion Kit

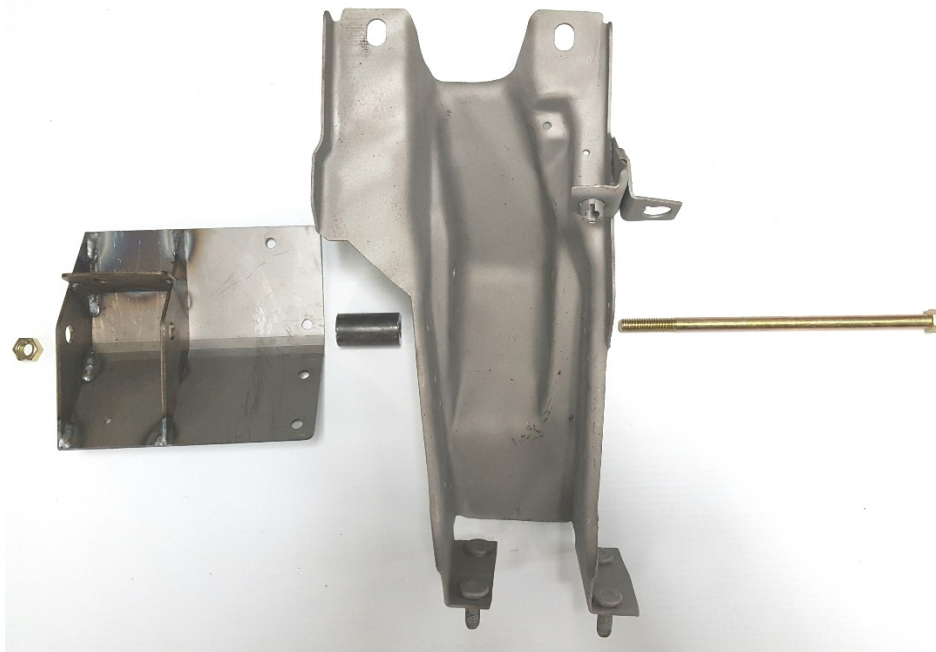
American Powertrain clutch pedal conversion kit is designed to convert a factory automatic equipped 1973-87 Chevy/GMC ½ ton truck pedal assembly to manual transmission set up. This conversion does require some modification to the automatic pedal and carrier in order to add the clutch pedal bracket. This can be done by drilling and bolting the new bracket onto the pedal carrier, or our preferred method is welding the new bracket to the carrier. The installation can be performed on a finished and driving truck but is easiest to install with all the dash components removed. This clutch pedal conversion will work with a mechanical clutch linkage or hydraulic master cylinder set up. American Powertrain also offers a full hydraulic master cylinder conversion kit that can be installed along with this to complete the entire conversion.

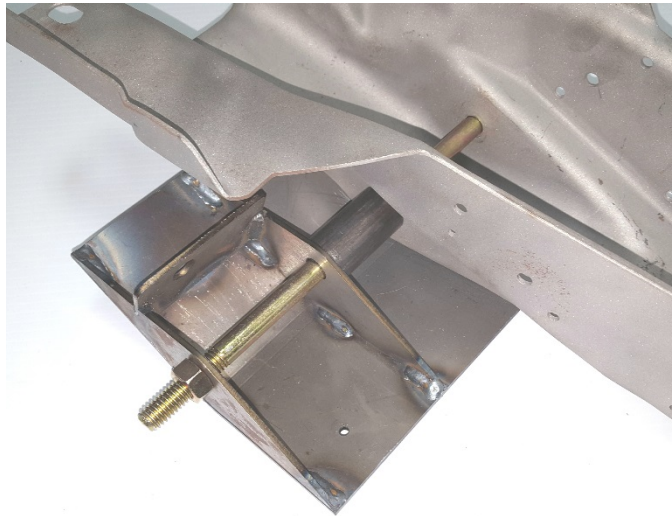


Parts List

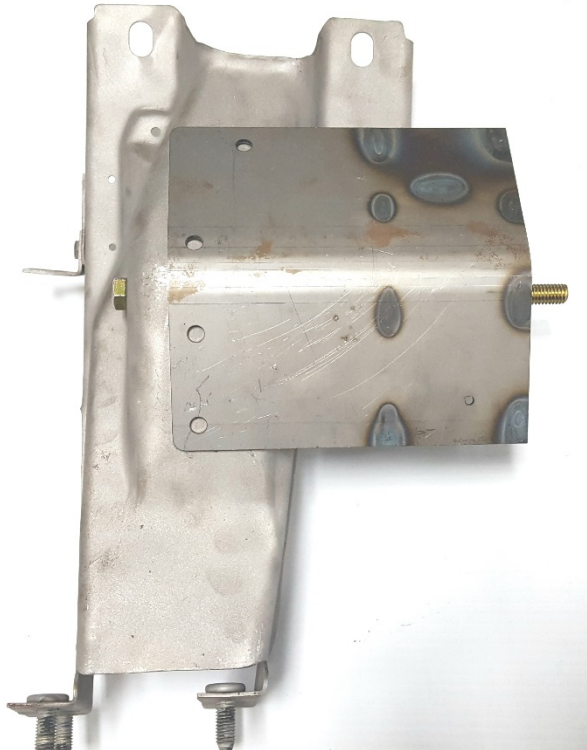
- 1pc Clutch Pedal
- 1pc pedal carrier bracket
- 1pc carrier bracket spacer (black powder coated)
- 1pc auto brake pedal conversion pad (steel)
- 2pcs rubber pedal pads
- 2pcs clutch pedal bushings
- 1pc 9" bolt
- 2pcs flat washers for 9" bolt
- 1pc Nyloc nut for 9" bolt
- 1pc standard nut for 9" bolt
- 1pc clutch pedal rubber bumper with hardware
- 1pc cotter pin for clutch pedal rod
- 2pcs bronze thrust bushings

1. The first step in the installation is to remove the existing automatic pedal and carrier from the truck in order to attach the new clutch pedal bracket.
2. Once the original pedal and carrier is removed, we recommend replacing the brake pedal bushings if they are worn. Since the automatic brake pedal pad is larger on the factory equipped automatic trucks you will need to cut down the original metal pad or remove it and weld on the new pad that we provide in the kit. This is also a great time to strip and repaint or powder coat the brake pedal to match the new clutch pedal that will be installed.
3. The next step is to fit the new clutch pedal bracket to the existing pedal carrier. Using the 9" long bolt, slip it through where the brake pedal attaches, then slide on the metal spacer bushing we included, and finally the clutch pedal bracket. Secure the assembly with the standard 7/16 nut. This will position the clutch pedal bracket in the correct position to either weld or bolt on.





4. If you decide to bolt on the clutch pedal bracket you will mark the location of the existing holes in the clutch pedal bracket. We do not provide hardware to bolt the bracket on as our preferred method is to weld the bracket for attachment.



5. When welding the clutch pedal bracket onto the pedal carrier we suggest plug welding the 4 holes and then stitch or fully weld the perimeter for added strength. It is also a good idea to go ahead and tack weld the metal bushing spacer in place to keep it from falling out when removing the bolt. That will also make installation of the pedals easier when that time comes.



6. Once the clutch pedal bracket is installed onto the carrier go ahead and paint or powder coat the carrier assembly.
7. *** Note- If installing back into a finished truck with all dash components already in place, it will be helpful to radius the front, top right corner of the carrier for added clearance. This makes positioning the bracket around the steering column much easier.**
8. Next, attach the clutch pedal stop using the provided rubber bump stop and hardware. There is an existing hole provided for installation.

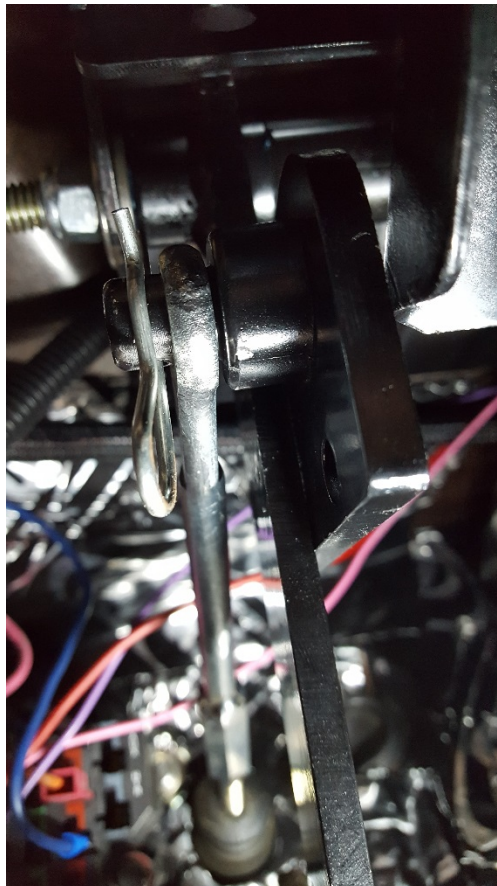


9. After the bump-stop has been attached to the pedal carrier it can be reinstalled into the truck. If you are working around the steering column it will be necessary to leave the pedals off the carrier until it is in place.
10. Once the pedal carrier is back in position, we suggest re-installing the nuts on the firewall side to hold the carrier in position but leave the steering column support loose until both pedals have been installed.

11. Prep both pedals for installation. At this time the pedals are ready to go in. Ensure that both pedals have all the necessary bushings installed and are lubricated.



12. Using the 9" bolt, 2 flat washers, and nyloc nut, install the bolt from the brake pedal side and slip the bolt through the carrier until you reach the clutch pedal position. Be sure to add the bronze thrust bushing washers on either side of the new clutch pedal as the bolt is being slid through. Thread on the nyloc nut and tighten to snug against the pedal carrier. It is not necessary to squeeze down on the carrier. Ensure that both pedals swing freely in both directions.
13. Attach the clutch rod or master cylinder push rod to the clutch pedal and secure with cotter pin.



14. Attach brake master cylinder push rod to brake pedal and re-install retainer bracket.

15. Re-install brake light switch. You may also choose to install a clutch pedal safety switch.
16. Bolt the steering column back into place and re-install any trim pieces or wiring that was removed for the installation.
17. If you haven't already, install the rubber pedal pads provided with the kit.
18. Congratulations, you're ready to go drive!

